

PIXMA PRO-200

Canon

Delighting You Always

Stunning Professional Quality Photos

up to A3+ size



The PIXMA PRO-200 maximises the performance of an 8-colour ink system to create professional photos up to A3+ sizes easily. Crystal-fidelity digital image processing workflow ensures the highest retention of image quality from image capture to print, making it the ideal companion for all professional photographers and graphic artists.

HIGH QUALITY

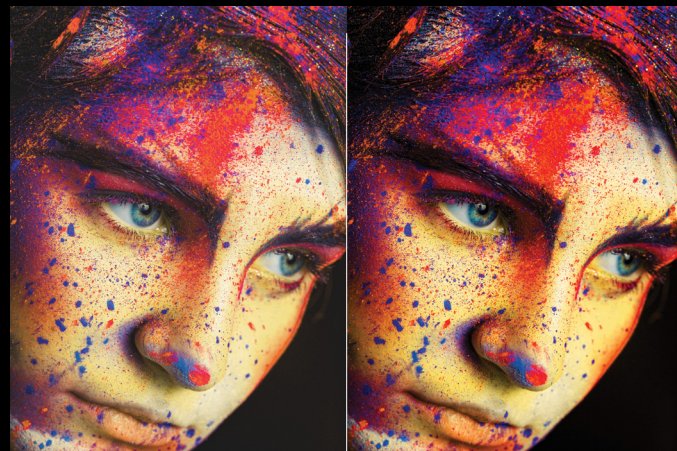
The unique 8-colour dye ink system in the PIXMA PRO-200 delivers a wider colour gamut than 4 or 6 ink systems, delivering superb contrast and enhanced blacks, with richer colour expression in red and blue zones. The Optimum Image Generating (OIG) System also analyses each area of print and chooses the best ink mixture to ensure the most accurate colour representation in print.



EXTENDED PRINT LONGEVITY

The new inks are designed for excellent print longevity, resisting fading and image degradation under common display conditions.

ChromaLife100+	GAS FASTNESS	LIGHT FASTNESS	ALBUM LIFE
Test Items	Ozone	Xenon	Photo Album (Dark Storage)
Test Standard	JEITA	JEITA	JEITA
Canon Photo Paper Pro Platinum	Approx. 10 years	Approx. 50 years	Approx. 200 years
Canon Photo Paper Pro Luster	Approx. 10 years	Approx. 50 years	Approx. 200 years



Predecessor Model

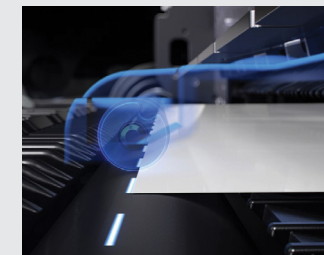
PRO-200

HIGH PRODUCTIVITY



COMPACT AND SPACE SAVING

15% smaller in footprint compared to predecessor models, taking up less space on work desks.



RELIABLE PAPER FEEDING

An automatic skew correction function prevents mistakes in paper alignment and reduces paper wastage.



3-INCH COLOUR LCD DISPLAY

Allows easy navigation of printer functions, as well as monitoring ink levels and paper settings.



VERSATILE MEDIA PAPER HANDLING

The ability to print stunning images on a diverse range of paper media sets this printer apart from the competition. Aside from matte, semi-gloss, super high gloss to Fine Art grade papers up to A3+ sizes, the PRO-200 also handles thicker papers easily with a manual feed tray for straighter path feeding. An included multi-purpose tray rounds up the impressive paper handling, giving the user additional options to print disk labels, and even nail stickers.

SUPPORTS PRINTING OF PANORAMIC PHOTOS AND CUSTOM BORDER MARGINS

The PRO-200 supports your creative vision with options to customise border margins for perfect framing requirements, panorama size paper at 210 x 594 mm as well as the ability to print on long paper lengths up to 990.6mm.



WORKFLOW SOLUTIONS

CANON PROFESSIONAL PRINT & LAYOUT SEAMLESS WORKFLOW INTEGRATION

The Canon Professional Print & Layout software enables a professional screen-to-print workflow for precise layout control and soft-proofing.

For users of supported Canon EOS system camera, Canon Crystal-fidelity technology extracts the maximum possible dynamic range, colour expression and sharpness, bringing images from camera to print effortlessly for hobbyists and professionals alike.



MEDIA CONFIGURATION TOOL FOR OPTIMAL PRODUCTIVITY

Simplifies media management for Canon and third party media, allowing you to customise media in both the driver and printer for optimum print result.



STUDIO QUALITY PRINTING

Whether for photography, fine art, or digital art prints, these papers reproduce photos with outstanding detail and quality, producing replica prints as beautiful as the originals.

NEW



FA-RG1
Premium Fine Art Rough
• 320 g/m²
• A4, A3, A3+, A2

A premium fine art rough paper for expressing depth of image and adding three-dimensional touch.



FA-SM1
Premium Fine Art Smooth
• 310 g/m²
• A4, A3, A3+, A2

A professional high-quality paper for professional inkjet printers.



LU-101
Photo Paper Pro Luster
• 260 g/m²
• A4, A3, A3+, A2

Luster finish provides an elegant surface that resists fingerprints and virtually eliminates glare.



PM-101
Photo Paper Pro Premium Matte
• 170 g/m²
• A4, A3, A3+, A2

Smooth texture with warm white tone for prints without the reflective sheen.



PT-101
Photo Paper Pro Platinum (Super High Gloss)
• 260 g/m²
• 4 x 6", A4, A3, A3+, A2

Professional studio finish photo paper offering outstanding quality.

SPECIFICATIONS		PIXMA PRO-200		
PRINT	Maximum Printing Resolution ¹	4800 (horizontal) x 2400 (vertical) dpi		
	Number of Ink Cartridges	8		
	Photo Print Speed ² (Approx.)	11 x 14" image on A3+ with Border	Colour, PT-101	1 min 30 s
		4 x 6" Borderless	Mono, PT-101	2 min 50 s
	Maximum Printable Paper Length	Top Tray	Bordered: 322.2 mm (12.7"), Borderless: 329 mm (A3+/13")	
		Manual Feed Tray	Bordered: 323.4 mm (12.7"), Borderless: 329 mm (13")	
	Printable Area	Borderless Printing	Top/Bottom/Right/Left Margin: each 0 mm	
		Bordered Printing	Top Margin: 3 mm, Bottom Margin: 5 mm, Left/Right Margin: each 3.4 mm (LTR/LGL: Left: 6.4 mm, Right: 6.3 mm) Recommended Top/Bottom/Right/Left Margin for Fine Art Paper: each 25 mm	
	Supported Media	Multi-purpose Tray	Printable Nail Sticker (NL-101), Printable Disc	
	Paper Size	Top Tray	A3+, A3, A4, A5, B4, B5, LTR, LGL, Ledger, Hagaki, 7 x 10", 12 x 12", 3.5 x 5", 4 x 6", 5 x 7", 8 x 10", 10 x 12", Square (5 x 5"), 210 x 594 mm Custom Size: Width 89 - 329 mm, Length 127 - 990.6 mm	
Manual Feed Tray		A3+, A3, A4, B4, LTR, LGL, Ledger, 12 x 12", 8 x 10", 10 x 12", 210 x 594 mm Custom Size: Width 203.2 - 330.2 mm, Length 254 - 990.6 mm		
Multi-purpose Tray		120 x 120 mm		
Borderless Printing ³		Up to A3+		
Paper Weight	Top Tray	Plain Paper: 64 - 105 g/m ² , Canon Genuine Paper (maximum): approx. 380 g/m ²		
	Manual Feed Tray	Canon Genuine Paper (maximum): approx. 380 g/m ² , or Paper Thickness 0.1 - 0.6 mm or less		
NETWORK / SYSTEM REQUIREMENTS & GENERAL SPECIFICATIONS	Windows	Please visit https://asia.canon.com to confirm OS compatibility and to download the latest driver.		
	Macintosh	Windows 10 / 8.1 / 7 SP1 ⁴		
	Interface	OS X 10.11.6, macOS 10.12 - 10.15		
	Mobile Printing Applications	Wireless LAN: 2.4GHz & 5GHz, IEEE 802.11a/b/g/n, 100Base-TX/10Base-T, USB 2.0		
	Other Connectivity Features	Creative Park, Canon PRINT Inkjet/SELPHY, Easy-PhotoPrint Editor		
	Power Consumption (Approx.)	Canon Print Service, PIXMA Cloud Link, Mopria, AirPrint, Windows 10 Mobile, Wireless PictBridge, Direct Wireless		
	Operating Environment ⁵	16 W (1.0 W Standby)		
	Recommended Environment ⁶	Temperature: 5 - 35 °C, Humidity: 10 - 90 % RH (no dew condensation)		
	Storage Environment	Temperature: 15 - 30 °C, Humidity: 10 - 80 % RH (no dew condensation)		
	Dimensions (W x D x H) (Approx.)	Temperature: 0 - 40 °C, Humidity: 5 - 95 % RH (no dew condensation)		
Weight (Approx.)	639 x 379 x 200 mm			
PAGE YIELD	A3+ Colour, Photo Paper PT-101 (ISO/JIS-SCID N2 test file) ⁷ (Sheets)	CLI-65 BK: 69 ⁹	CLI-65 PC: 59 ⁹	
		CLI-65 GY: 96 ⁹	CLI-65 M: 77 ⁹	
		CLI-65 LGY: 139 ⁹	CLI-65 PM: 54	
		CLI-65 C: 51	CLI-65 Y: 55	
	A3+ Mono, Photo Paper PT-101 (ISO/JIS-SCID N2 test file) ⁷ (Sheets)	CLI-65 BK: 43	CLI-65 PC: 78 ⁹	
		CLI-65 GY: 35	CLI-65 M: 270 ⁹	
		CLI-65 LGY: 44	CLI-65 PM: 108 ⁹	
		CLI-65 C: 181 ⁹	CLI-65 Y: 250 ⁹	
	4 x 6" Colour, Photo Paper PT-101 (ISO/IEC 29103 test file) ⁸ (Sheets)	CLI-65 BK: 860 ⁹	CLI-65 PC: 275	
CLI-65 GY: 595 ⁹		CLI-65 M: 610 ⁹		
CLI-65 LGY: 965 ⁹		CLI-65 PM: 320		
CLI-65 C: 482 ⁹		CLI-65 Y: 295		

Specifications are subject to change without notice.

¹ Ink droplets can be placed with a pitch of 1/4800 inch at minimum.

² Photo print speed is based on the default setting using ISO/JIS-SCID N2 and does not take into account data processing time on host computer.

Print speed may vary depending on system configuration, interface, software, document complexity, print mode, page coverage, type of paper used etc.

³ Paper types NOT supported for borderless printing are as follows: Envelope, High Resolution Paper, T-shirt Transfer and Photo Stickers.

⁴ Operation can only be guaranteed on a PC with pre-installed Windows 7 or later.

⁵ The performance of the printer may be reduced under certain temperature and humidity conditions.

⁶ For the temperature and humidity conditions of papers such as photo paper, refer to the paper's packaging or the supplied instructions.

⁷ When printing ISO/JIS-SCID N2 test file at 11 x 14" size continuously on A3+ Photo Paper Pro Platinum (PT-101), with the default settings of testing paper using Windows 10 printer driver and Photoshop CC.

⁸ Declared yield value in accordance with ISO/IEC 24711 (for A4) using ISO/IEC 24712 test file and ISO/IEC 29102 (for 4 x 6") using ISO/IEC 29103 test file. Value obtained by continuous printing.

Right-click the image on Windows 10 and select "Print" from the menu to print.

⁹ Estimated Supplemental Yield.



SOUTH & SOUTHEAST ASIA
REGIONAL HEADQUARTERS

CANON SINGAPORE PTE. LTD.
1 Fusionopolis Place, #15-10 Galaxis,
Singapore 138522
Tel : 65-6799-8888
Fax : 65-6799-8882
<https://asia.canon>



www.facebook.com/CanonPIXMA

Canon Singapore Pte Ltd. All rights reserved.

This document is for information purpose only and the contents are subject to change without notice. Product options, name and availability may vary by regions. Nothing in this document should be construed as a warranty. We expressly disclaim any liability or contractual obligations with respect to this document.

